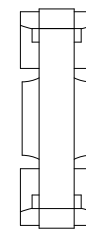
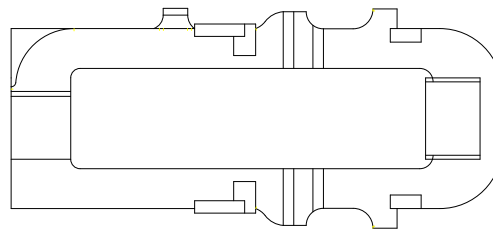
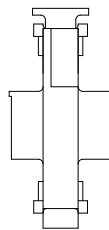
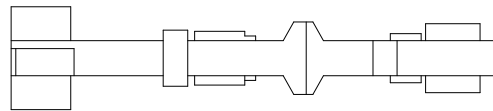
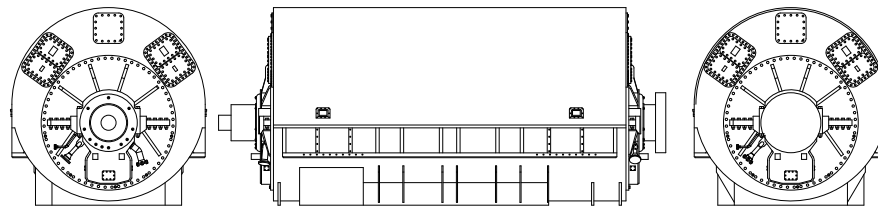


The PRR **FD-2 flat car** illustrated above is carrying a Westinghouse turbo-generator, a load that was typical during its service life. Our representation of the Westinghouse unit is based on data taken from the first load that the FD-2 ever carried while en route to the Houston Power & Light facility in Texas. Our scale load will not be a 'placeholder' representation, it is being designed and built as a full-featured scale model unto itself. Shown at the upper right are three views of the generator that illustrate the level of detail being incorporated into our model and after considering multiple methods and materials for use in the modeling process, it was decided to maintain consistency with the construction of the flat car. Our miniature Westinghouse generator is being built using a combination of fabricated and formed brass components for the main structure and brass castings for the detail elements, just as we do for our finest locomotive projects. In addition, our scale generator will be prototypically painted and decorated.



The PRR **FW-1 flat car** illustrated below is shown carrying the first load for which the carbody was designed and built. Although over time, the FW-1 carried many different types of loads that required the use of a high-capacity 'well' type car, the carbody was originally designed and built by United Engineering & Foundry Company to carry one of their products, a massive forged frame that formed the foundation of a metal stamping press. As can be seen from the four illustrated views of the forged frame at the lower left, it had an intricate design consisting of both regular and irregular shapes. Our challenge is to replicate this load using fabricated, formed and cast parts that, when assembled, have the appearance of being one giant seamless 'part'. Using brass as our media to be consistent with the quality of the car construction, the assemblage of components will be finished and painted to faithfully represent the overall forged appearance.

